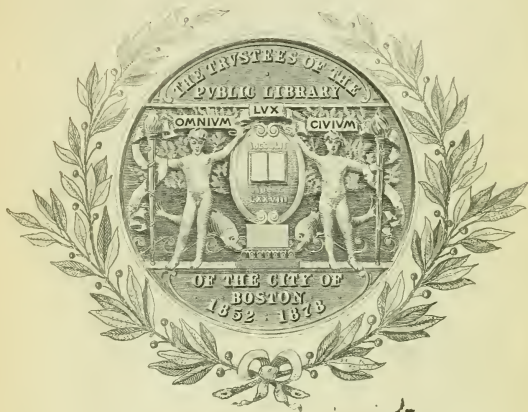
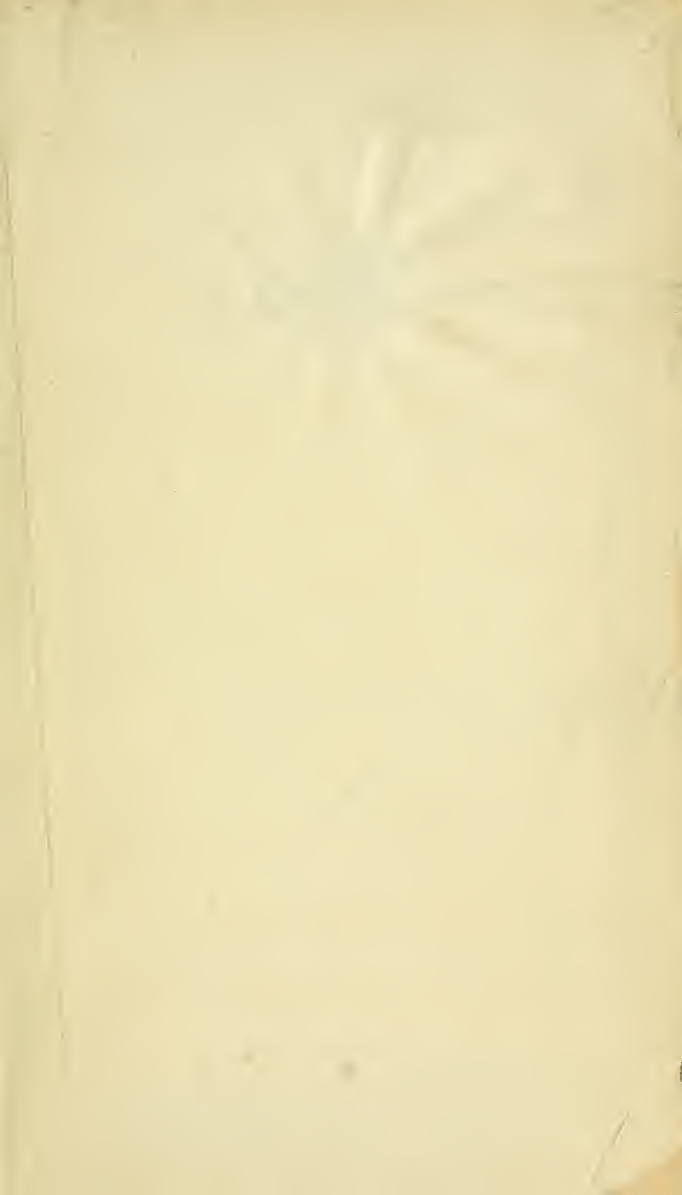


No 3049a.281



1545

Bought with the
Abram E. Cutter Fund





KE

KUMU MUA ANO HOU,

I HOONANIA I NA KII MAIKAI.



NA J. PULA I KAKAU.

UA HOOPOLELEIA E KA PAPA

HOONAAUAO

A PAI HOU IA MA

BOSTON:

C. R. WHITING.

3049a. 281

Entered according to Act of Congress in the year 1861, by
BAZIN & ELLSWORTH,
in the Clerk's office of the District Court of the District of Massachusetts.

Cutter.

Dec. 5, 1904 m.

RAND AVERY COMPANY,
ELECTROTYPERS AND PRINTERS,
BOSTON.

OLELO HOOAKAKA

I NA KUMUAO

Ua kakauia i keia palapala me ka manao, he mea ia e pono ai e kokua ia oukou i ke ao pono ana i na keiki ma ka heluhelu i na palapala Hawaii; nolaila mai wikiwiki oukou. E akahelu i ke ao ana i na keiki; no ka mea, ka palapala mua keia. Maa-nei e loa'i ia lakou i ke kumu o ko lakou naauao mahope aku. E hoao ia lakou ma kekahi aoao, a like ka heluhelu ana o na keiki me ke kamailio maoli. Ina ua like ole ke ano o ka heluhelu, me ke ano o ke kamailio maoli, i na ua hewa, a e hoao hou i ke keiki ma ia aoao a pololei; alaila, e hele aku i ka aoao hou, a pela e hana'i a pau ka palapala i ke ao ponoia.

Ma ke aopakahi ana i na hua o na huaolelo okoa i pai kaawaleia, ma kela a ma keia aoao o ka palapala, mai ae oukou i ka hoopili ana o na keiki i ka *he*, mamua o na hua i aopakahiia, penei: o *manu* paha ka huaolelo i manaoia e haawi i kahi keiki e ao pakahi ai i na hua. Aole pono kana olelo mai *he-m*, *he-a*, *he-n*, *he-u*. He huikau ia. E ia ka pono. E haalele i ka *he*; a penei ka olelo kupono i ka haumana e hana'i, m-a-n-u — manu — Pela oukou e hana'ku ai ma ke aopakahi ana i na hua.

Ma ka aoao 42, a me 43, ua paiia he mau kanawai no na kiko, a no Ka heluhelu ana; a ma ka aoao hope loa, ka pule a ka Haku.

Me ke aloha,

M. KEKUANA OA,

Pelesekena o ka Papa hoonaauao.

HONOLULU, 1862.

A	E	I	O	U	H
---	---	---	---	---	---

K	L	M	N	P	W
---	---	---	---	---	---

a	e	i	o	u	h
---	---	---	---	---	---

k	l	m	n	p	w
---	---	---	---	---	---

Aa	Ee	Ii	Oo	Uu	Hh
----	----	----	----	----	----

Kk	Ll	Mm	Nn	Pp	Ww
----	----	----	----	----	----

He	Ke	La	Mu	Nu	Pi
H	K	L	M	N	P

		We	W		
--	--	----	---	--	--

I	II	III	IV	V	VI
---	----	-----	----	---	----

	VII	VIII	IX	X	
--	-----	------	----	---	--

E pii oe. E pii
 no au. O oe no ke
 pii. Ua pii no au.
 Ja pii no oe. Ua
 pii ka ea. Ua po
 ka la.



Na Hua mua Hawaii.

ha	he	hi	ho	hu
ka	ke	ki	ko	ku
la	le	li	lo	lu
ma	me	mi	mo	mu
na	ne	ni	no	nu
pa	pe	pi	po	pu
wa	we	wi	wo	wu

Akahi. Elua. Ekolu. Eha. Elima.

1 2 3 4 5

Eono. Ehiku. Ewalu. Eiwa. Umi.

6 7 8 9 10



KE KAO.

Holo ke kao. He kao nui n
 E holo ana ke kao. Me he lio
 ka holo ana. Ua holo loa ke kao.

ae	ai	ao	au
hae	hai	hao	hau
kae	kai	kao	kau
lae	lai	lao	lau

kao lio nui loa ana

He lio. E ai
 ana ka lio i ka
 mauu. Ku ka
 lio i ka ai ana.
 He lio nui. E
 nana oe i ka lio
 e ai ana.

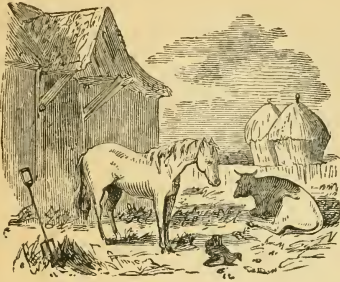


lio mauu nui ana

He wai e inu ia.
 Ono ka wai e inu.
 E inu oe i ka wai.
 Ua ono ka wai i ka
 mea e inu. Ono
 ka lio i ka wai.



mae	mai	mao	mau
nae	nai	nao	nau
pae	pai	pao	pau
wae	wai	wao	wau



He lio, he pipi,
a me ka moa.
E nana oe i ka
lio. E moe ana
ka pipi. Aole
paha oe i ike i
ka moa?

pipi

nana

paha

aole



He hipa. Ua moe
ka hipa. E akoia
ana ka hulu. Paa
ka upa i ka lima.
E ike oe i ka
hipa.

ea

ee

ei

eo

eu

hea

hee

hei

heo

heu

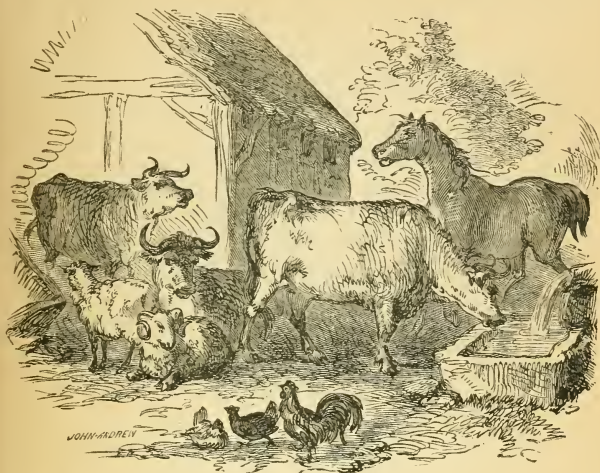
kea

kee

kei

keo

keu



Auwe ! He kii nani ia ! E nana oe
 i na mea a pau. He lio, he mau bipi,
 me na hipa, a me na moa. He wai
 no hoi. Inu ka pipi i ka wai.

nani	hipa	lima	moa
inu	oki	hulu	upa

mea	mee	mei	meo	meu
nea	nee	nei	neo	neu
pea	pee	pei	peo	peu
wea	wee	wei	weo	weu



He mau lio kauo kaa. Ehia na lio 'Ehia mau lio me ke' kaa. Aia ka bipi nui ke ku mai la. Nana ka bipi na lio. Ua holo pono na lio.

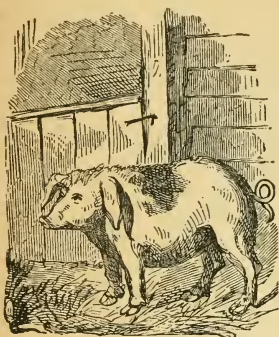
ia	ie	ii	io	iu
hia	hie	hii	hio	hiu
kia	kie	kii	kio	kiu
lia	lie	lii	lio	liu
mia	mie	mii	mio	miu
nia	nie	nii	nio	niu
pia	pie	pii	pio	piu

E moe ana ka lio.
 Ai ka lio i ka ai ma
 ka lima o ke keiki.
 He hale lole. Aole
 he hale lio. Oia ka
 hale o kona kahu.
 Hanai ke keiki i ka
 lio.



oa	oe	oi	ou	aa
hoa	hoe	hoi	hou	haa
koa	koe	koi	kou	kaa
loa	loe	loi	lou	laa
moa	moe	moi	mou	maa
noa	noe	noi	nou	naa
poa	poe	poi	pou	paa

lima	hale	kahu	kona
aole	lole	keiki	kane



He puaa no ia.
 E ike anei oe i ka
 puaa? E ku wale
 ana ka puaa. He
 puaa nui, aohe nae
 inui loa. Ono ka io
 o ka puaa.

ua	ue	ui	uo	uu
hua	hue	hui	huo	huu
kua	kue	kui	kuo	kuu
lua	lue	lui	luo	luu
mua	mue	mui	muo	muu
nua	nue	nui	nuo	nuu
puu	pue	pui	puo	puu

puaa	wale	anei	aohe
holo	hoki	manu	iole
kaka	ehia	elua	umi
kolo	kalo	malo	nalo



E, ka ilio, e noho malie oe. Mai uwe oe no ke kumu ole. E haka pono mai, i lohe pono oe. a, e, i, o, u. Auwe! Aole anei oe e pane iki mai? He ilio wale no, ka!

Pela no o Kale, i kona ao ana i ka ilio Aole nae i pane mai ka ilio.

ilio	aole	pela	lohe
haka	noho	kumu	kona



E hele mai oe, o nana i na manu.
 Heaha ka inoa o na manu? He
 manu nunu. E noho ana laua ma
 ka hale lio. Heaha ka laua mea
 ai? He mau hua no; o ka huika,
 oka, pale, a pela aku. He manu
 maikai ka nunu.

manu

nana

hele

inoa

nunu

noho

laua

hale

malo

pale

pela

maikai

Hana na keiki i
ka lupe. He mau
keiki kula no laua.
Ua pau ke kula. E
lele ana ka lupe i
ka lewa. Olioli na
keiki.



hale	hele	holo	hala	hila
kale	kele	kolo	kala	kila
lale	lele	lolo	lala	lila

He hoki oluolu
keia. Na ke keiki
liilii e hanai ia ia.
Aole huhu ka hoki,
a ole makau iki ke
keiki, maikai no.
Ku malie ka hoki.



male	mele	molo	mala	mila
nale	nele	nolo	nala	nila
pale	pele	polo	pala	pila



Aia ka pipi waiu.
 He pipi maikai hoi.
 Hanai ke keiki ia ia.
 Ono ka waiu o ka
 pipi, a ono no hoi
 kona io. Ua ai ka
 pipi i ka mauu.

pipi	hipa	kipi	lipi	miko
nika	piko	wiwo	hilo	pini
hema	kema	lema	nema	pena



He lio-laau. Ua
 waiho ka laau ma
 ka lio-laau. Ua
 moku ka laau i ka
 pahi olo. E olo ana
 ka mea nana ka pa-
 hi olo.

hoki	koki	loki	poki	woki
hiki	kiki	liki	piki	wiki
hulu	kulu	lulu	pulu	muli

He mau manu.
 Ehia na manu? ~~U-~~
 kolu manu. He
 manu makua, a he
 mau keiki elua. Na-
 na iho la ka makua i
 na keiki ma ka wai.



elua	ekolo	ehia	nana
manu	makua	keiki	kaka

Alia! Alia! mai
 lawe i na hua o na
 manu liili. Olioli
 na keiki i ka loaa
 ana o ka punana o
 na manu liili.



lawe	loaa	alia	hua
punana	liili	olioli	mai
huna	kuna	luna	puna



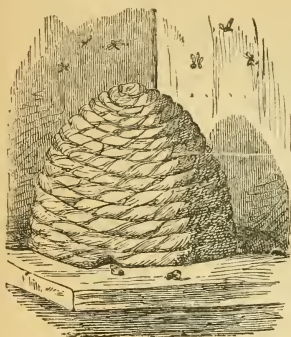
He hoki kauo kaa kela. Ualawe-
 iaka mauu ma ke kaa. Aia na kei-
 ki elua ma ka mauu. E haule ana
 paha laua. Alia! Alia! o haule
 olua. Ua ku malie ka hoki. E le-
 le iho olua. Mai pii hou iluna, c
 haule olua.

hoki	kauo	lawe	lana
haule	iluna	malie	pela
hele	laua	alia	olua



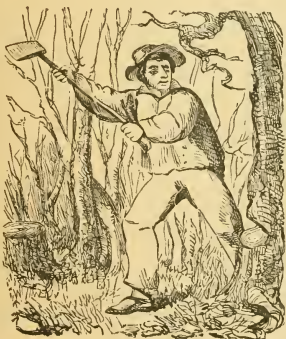
Holo na moku liilii ma ka wai.
 He moku kialua, a he moku kia-
 kahi. Ua oluolu na keiki i ka holo
 pono ana o na moku liilii. Hele
 na keiki iloko o ka wai. Mai hele
 oukou ma kahi hohonu o ka wai, e
 malama oukou, i pilikia ole.

kiakahi	kialua	kiakolu
iloko	hohonu	malama
oluolu	pilikia	keiki
moku	komo	oukou



E nana oe i na nalo meli. Heaha la keia hale pió, ano e e ku nei? Oia ho ka hale nalo meli. He hale e noho a no lakou, a he wai hona meli.

nalo	meli	komo	kahi
iloko	hale	waihona	noho



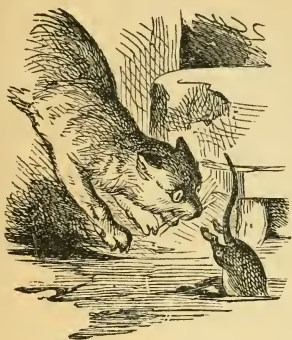
Ke kua nei ke kanaka i ka laau nui. Mamuli e hina iho ka laau. Aia ka ulu laau ma ka mauna. Pii na kanaka maluna o ka mauna.

mamuli	maluna	haule
--------	--------	-------



Aia kekahi hale-kula nui, ke ku
 mai la. Ua hoomaha ke kula. Nui
 na kamalii e paani ana. I ke kani
 ana o ka pele, holo na keiki iloko o
 ka hale. E malama oukou i na
 lula, e noho malie, mai walaau iki.

kamalii	hoomaha	mamuli
kekahi	malama	walaau
paani	iloko	malie



He iole ! he iole !
 Auwe ! ane pilikia
 i ka popoki. Lele
 ka popoki i ka iole,
 aole nae i loa. Pa-
 kele ka iole, mai
 make.

popoki
 pilikia

pakele
 iole

kokoke
 auwe



He wahi keiki
 opio kela. E ai
 ana oia i ka waiu
 me ka berena. Ono
 ka waiu a me ka
 berena. Ono ke
 kalo.

wahi

opio

waiu

kalo

berena

ono

keiki

kela



Hanai ke keiki i na iole kahiki. Ai na iole i ka uala, me na karoke, na laulele, na kapiki. Heaha la na karoke? Oia na uala pake. He mau iole laka no ia, aole makau iki i ke keiki. Malama pono loa ke keiki ia laua.

kahiki

kamalii

karote

tanapi

kapiki

heaha

hanai

laka

malama



o ke kia kane.

E nana i na kia.
He kia kane kekahi.
Kiekie kona poo. E
inu kekahi i ka wai.
Nana ae la na keiki
ia laua, maluna o
ka pa. Elua hao

kia	elua	laua	kane
kokoke	mahope	maluna	



Hele ke kanaka
ma ke alanui ma-
waena o ke kulana-
kauhale. E nana oe
i ka halepule. Kani
ka pele no ka hala-
wai.

kanaka	mawaena	halawai
kulana	kauhale	halepule



Oluolu ka lawaia, ke loaia ia ka
 ia. Holo ka waapa me ka pea.
 Elua kanaka ma ka waapa e lawaia
 ana, me ekolu mau keiki maluna ae
 o na pohaku. He ilio no hoi keka-
 hi. Heaha ia mea i waiho ia ma-
 laila? He pakeke paha, i mea e
 waiho ai na ia. Ono ka ia i ka ai
 ana.

oluolu	lawaia	pohaku
malaila	bakeke	kamalii



Poai a puni na kaikamahine me ke mele olioli loa. Ua hoomaha ke kula, nolaila, holo wikiwiki lakou ka paani maikai. Malaila e loa'ia lakou na kino maikai a me ka ikaika. He mau keiki kula lakou ua pau na haawina i ka huliia. Ua noho malie lakou iloko o ke kula.

hoomaha	nolaila	apuni
olioli	wiki wiki	paani



Kahaha! Heaha la ia mau mea
 lele ae la iluna? He mau mea
 poepoe lakou, i paa i na kaula. He
 mau paluna liilii lakou. Ua hanaia
 e ka poe akamai o Palani. He mau
 mea paani no na keiki liilii. Ua pi-
 na i ka ea mama loa; nolaila, lele
 koke lakou iluna.

paluna
 iluna

kahaha
 akamai

poepoe
 farani



Huro! Huro! Holo maoli hoi kamalii. Aoaoa! aoaoa! Hahai aku la na ilio i kamalii me ka leo hoehoe.

He lealea kupono no na keiki kula, i mea e oluolu ai ka manao, a e ikaika ai ke kino.

A pau ka hoomaha ana o ke kula, e hoi lakou iloko, a e hooikaika hou ma ka ike.

hoomaha	hooikaika	maoli
lealea	kamalii	aoaoa

He kaa nui keia.
 Ia kupono ia no na
 anaka he kanakolu
 aha. Holo na kaa
 ui maloko o na ku-
 lana-kauhale; ma
 ahi o na kanaka he
 ui wale---Ua paa ke alanui i ka
 ao, i mea e holo mama ai na kaa.



Ke hanai nei o
 Ana i ka moa. Hea-
 na la anei ka mea
 i? O ka huika pa-
 na; ai ole ia, o ke
 kulina paha; no ka
 nea, makemake nui
 ka moa ia mau mea.



makemake	hanai	huika
kulina	oia	pale moa
kulana-kauhale		alanui



Lealea loa kamalii i ka paani ana. Ekolu lakou, elua keiki kane, a hoo-kahi kaikamahine. Heaha la ia mea poepoe malalo? Heaha la? He mea paani no kamalii, he Hu ka inoa ma ka olelo Hawaii?

He mau keiki kula paha lakou. O Ioane, o Hali, a o Mele. Ua hoomaha ke kula, nolaila, e paani ana lakou.

hoomaha	nolaila	paani
poepoe	kamalii	hookahi

Lele ka papale o ke keiki i ka makani. Aole nae nalo wale loa. E kii ana oia a loa. He aha la ia mea ma ka lima o Ana? He popoki no, he popoki liilii.



papale popoki makani

E huki! e huki oe, e ke keiki, a loa ka wai mailoko mai, o ka pakeke. Hohonu loa ka punawai. Ono ke keiki i ka wai no ka wela o ka la.



punawai pakeke hohonu
kamalii maloko huki



Auwe! Mama maoli ka ilio, a me ke keiki no hoi.

Olioli o Ana i ka holo ana me ka ilio. Hoopaa ia i kona kii keiki maluna o ka ilio, a holo lealea aku la laua elua. Owai la ka inoa o ka ilio? O Rova no ia. He ilio nui o Rova, he Nupaunelani.

mama
lealea

maoli
maluna

olioli
ilio



He paani lealea no keia. Auwe !
 Ka walaau a me ka haunaele ! He
 walaau lealea no hoi ia, aole hewa.

Ua paa na maka o kekahi, i ike
 ole ; alaila huli oia i kona poe hoa
 paani, a loa kekahi a paa i kona
 lima. Hai aku la no oia i ka inoa,
 a ina ua pololei ka inoa ; alaila, e
 hookuuia oia, a e hoopaaia kela.

hookuu walaau lealea



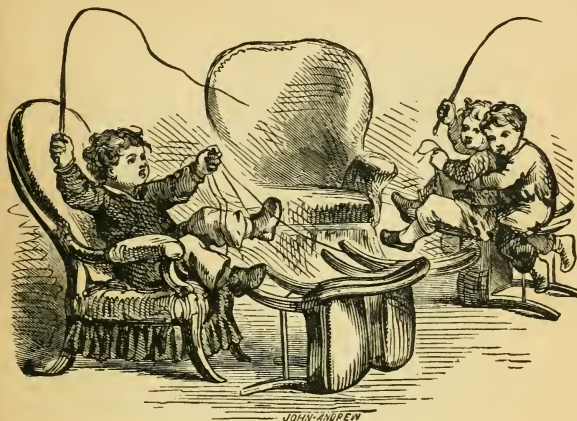
Heaha la ka mea i koe? Akamai maoli ka poe i hana i na kii. Ua maopopo ka lio me ke kaa, ke kane me ka wahine, na keiki me ka ilio.

Me he mea la, ua makemake ka ilio e pii iluna o ke kaa, a e noho pu me na keiki. Aole paha e ae aku ke kanaka.

maopopo
kanaka

akamai
keiki

wahine
kamalii



“Holo! Holo!” wahi a na keiki.
 Heaha la keia? He mau lio kauo
 kaa anei lakou? Aole, he mau no-
 ho wale no. Paani na keiki, me he
 mea la, he mau lio maoli na noho.

O na noho nui, oia na kaa holo o
 lakou. Kupanaha ka paani lealea
 ana o na keiki liili.

holo	kauo	aole	wale
noho	maoli	paani	wahi



Auw—e! Kolohe maoli na keiki liilii. Ua noho ae la o Kale ma ka nohonui, me ka papale nui o kona kupunakane, me na maka-aniani a me ka nupepa. Ku ae la o Wilie, iloko o na kamaa nui o kona makua a me ke kookoo nui.

Kahaha ae la ke kupuna-wahine i ka nana'na'ku. Kolohe olua e na moopuna.

moopuna kupuna nupepa



Hele ae la o Mele ma kahi o ka manu olelo, e paani pu. I aku la o Poli, (oia ka moa o ka manu.) “Ua pololei,” me ka akaaka ana.

I ko Poli holo ana ma na kaa o te alanui—holo-kaa-ahi, ua lohe pinepine oia ia olelo a ka luna holo aia; nolaila, ua loa ia ia.

parote
akaaka

paani
alanui

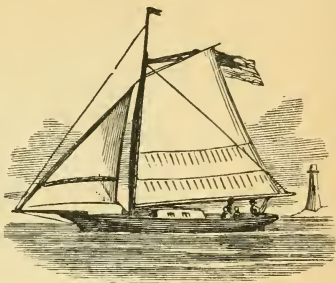
pololei
pinepine



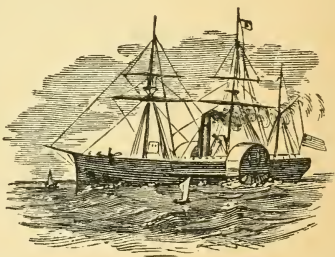
Ku wale o Iaka ma kahi o ke
alanui, aole hele iki, paakiki loa
Pela ke ano mau o ka Hoki. Aole
pono e hahau ia ia, e noho malie oe
e Kale, a oluolu o Iaka, e holo aku
E kahea aku ia Rebeka e kali iki, a
pau ka huhu o Iaka.

Iaka	paakiki	Rebeka
kahea	oluolu	hahau

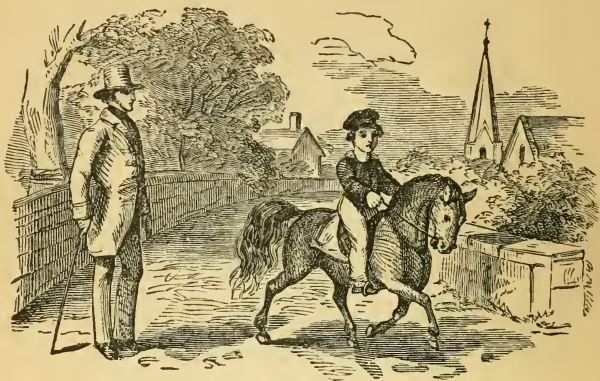
He moku kia-
kahi keia, e holo
malie ana ma ke
kai. A he hale
kukui no maó
aku. He mea e
alakai i na mea moku e holo ana i
ka po.



He mokuahi no
keia. Aole anei
oia o Kilauea?
Aole, he moku
okoa keia, aia ko-
na mau huila ma na aoao, aole pe-
la o Kilauea. Aia mahope kona
huila —



kiakahi	kukui	mokuahi
kilauea	mahope	huila



Holo maikai aku ka lio ma ke alanui o ke kulana-kauhale. O kona makemake no ia, e lawe i kona kahu liili maluna o kona kua. Ua malama pono loa ke keiki i kona lio, no kona aloha iaia. Aole hahau ia, aole hou ino me na kepa. Ua hanai pono ia, a ua kahi ia no hoi, i kela la a i keia la. Me he pahoeheo la, kona hulu i ka ninuninu ana.

makemake hooluhi pahoeheo



He buke hou! He buke hou!
wahi a Ana, i ka loa ana iaia o ke
Kumu Mua ano hou.

Lohe ae la o Hare, Ioane, me
Wilie i ka leo olioli o ko lakou ma-
kamaka liilii, a holo wikiwiki aku
lakou i ka hale, e nana i ka mea
hou —

Wehe ae la o Ana i ka puke ma
ka papa, e ike lakou. Oluolu maoli
lakou i ka ike ana i na kii.

wikiwiki

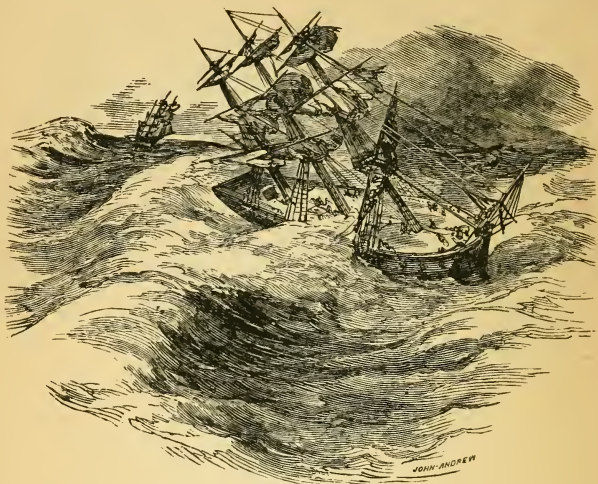
makamaka

ana

waiho

puke

kumu



Pilikia ka moku i ka makani ino.
Ua nahae na pea, a moku pu me na
kaula.

Kiekie loa na ale; luliluli ka mo-
ku i o, a ia nei, me he mea ona la.
Aole hiki i na luina ke hoopaa i na
pea, malama lakou i na mea olalo—
Pauma lakou i ka liu, i poho ole ka
moku.

luliluli
pilikia

kiekie
nahae

makani
kaula

NO KA HELUHELU MAIKAI ANA.

O ka heluhelu maikai, oia ke ki e wehe ai i ka waihona nui o ka Ike. O ka mea akamai ma ka heluhelu ana, e hiki ia ia ke lawe i ka waiwai mailoko mai o na palapala a pau. Nolaila, he pono ia oe, ke malama i keia mau rula.

1. Hoohalike ka heluhelu ana me ke kamailio maoli.

2. E hoonui pono i ka leo, i lohelea ai na mea a pau, a i maopopo ke ano o na mea i heluheluia.

3. E malama pono i na kiko. E kolu no ano o na kiko : o ke kuhikuhi i ke ano o ka leo, ke kuhikuhi i ke ano o ka olelo, a, he mau mea hoomaha hoi.

4. E hanu ma kahi hoomaha, aole ma kahi i kiko oleia.

NO NA KIKO.

(,) O ke Koma, oia ke kiko hoomaha iki. He mea ia e hookaawale ai i kekahi mamalaolelo. Aole emi ka leo ma ka nui o na koma. Ua like paha ka loihi o ko ke koma hoomaha me ka puana o ka leo hookahi, penei : *pa*.

(,) O ke Kikokoma, oia ke kiko e hookaawale ai i kekahi hapa o ka hopunaolelo, mamua ae o ko ke koma, a o kona, hoomaha, ua like paha ia me ka puana o na leo elua, penei : *pa-pa*.

(:) O ke Kolona, oia ke kiko e hookaawale ai i kekahi hapa ano e o ka hopunaolelo, a o kona hoomaha, ua like paha ia me ka puana o na leo ekolu, penei : *pa-pa-na*.

(.) O ke Kikokahi, oia ke kiko hoomaha no ka pau ana o ka hopunaolelo, a ua like paha kona hoomaha me ka puana o na leo eha, penei : *pa-pa-na-na*.

(?) O ke Kikoninai, he hoailona ia no ka niele ana ; e hoonui i ka leo, a e hooemi i kekahi — a o kona hoomaha, ua like ia me ko ke kikokahi.

(!) O ke Kikopuiwa, he hoailona ia no ka manao ano e ; mea kahaha, hauoli, kaumaha, a pela'ku. E pii paha ka leo, a e iho paha, e like me ke ano o ka manao.

() O na Kahaapo, oia ka hoailona o ka manao okoa i kaku ia mawaena o ia mau kaha. E pono e heluhelua me ka leo uuku iho, a wikiwiki no hoi.



KA NOHO OLUOLU.

Mahea la anei ia wahi oluolu ?

Aia ma kahi e noho ai ka makua-
kane, me ka makuawahine, a me ka
lakou mau keiki, me ka maluhia a
me ke kuonoono. Ua pau na hana
a lakou, a ua akoakoa lakou iloko o
ka hale. Ua lilo ka manawa i ka
heluhelu palapala paha, a i ka mele
ana i na himeni paha. Oluolu la-
kou; no ka mea ua piha ko lakou
mau naau i ke aloha.

KA OLELO A IESU MA KA MAUNA.

Poomaikai ka poe i haahaa ka naau; no ka mea, no lakou ke Aupuni o ka lani.

Pomaikai ka poe e u ana; no ka mea, e hooluoluia 'ku lakou.

Pomaikai ka poe akahai; no ka mea, e lilo ka honua ia lakou.

Pomaikai ka poe pololi a makewai no ka pono; no ka mea, e hoomaonaia lakou.

Pomaikai ka poe i aloha aku; no ka mea, e alohaia mai lakou.

Pomaikai ka poe i maemae ma ka naau; no ka mea, e ike lakou i ke Akua.

Poomaikai ka poe uwao; no ka mea, e iia lakou he poe keiki na ke Akua.

pomaikai
hooluolu

haahaa
akahai

aupuni
makewai

HE MAU OLELO HOU AKU A IESU.

Pomaikai ka poe i hana ino ia mai no ka pono ; no ka mea, no lakou ke aupuni o ka lani.

E pomaikai ana no oukou, ke hoino mai kanaka ia oukou, ke hoomau mai no hoi, a no'u nei e olelo wahahee mai ai ia oukou i na mea ino a pau.

E hauoli oukou, e olioli nui hoi ; no ka mea, he nui ka uku no oukou ma ka lani : pela lakou i hana ino alu ai i ka poe kaula mamua o oukou.

Pomaikai ke kanaka i hele ole ma ka olelo a ka poe aia.

I ku ole hoi ma ka aoao o ka poe hewa, i noho ole hoi ma ka noho o ka poe haakei.

Aka, ma ke kanawai o Iehova kona olioli, a ma kona kanawai oia i manao ai i ke ao a me ka po.



E ko makou Makua iloko o ka lani, e hoanoia kou inoa. E hiki mai kou Aupuni; e malamaia kou makemake ma ka honua nei, e like me ia i malamaia ma ka lani la. E haawi mai ia makou i keia la i ai na makou no neia la; e kala mai hoi ia makou i ka makou lawehala ana, me makou e kala nei i ka poe i lawehala i ka makou.

Mai hookuu oe ia makou i ka hoowalewaleia mai: e hoopakele no nae ia makou i ka ino; no ka mea, nou ke Aupuni, a me ka mana, a me ka hoonaniia, a mau loa aku. Amene.



Boston Public Library
Central Library, Copley Square

Division of
Reference and Research Services

The Date Due Card in the pocket indicates the date on or before which this book should be returned to the Library.

Please do not remove cards from this pocket.



